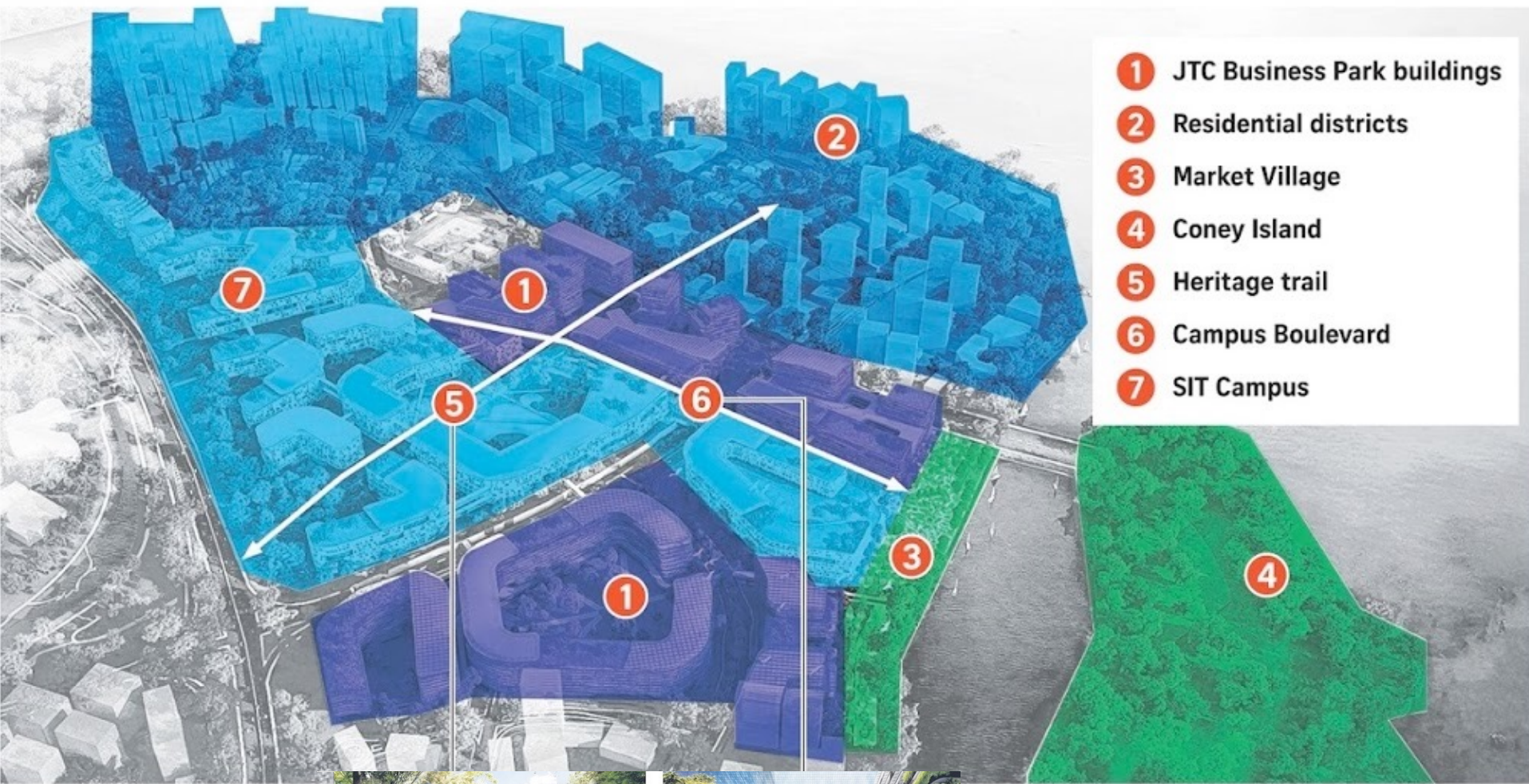


Sentosa Resort Island: Masterplan & Zoning

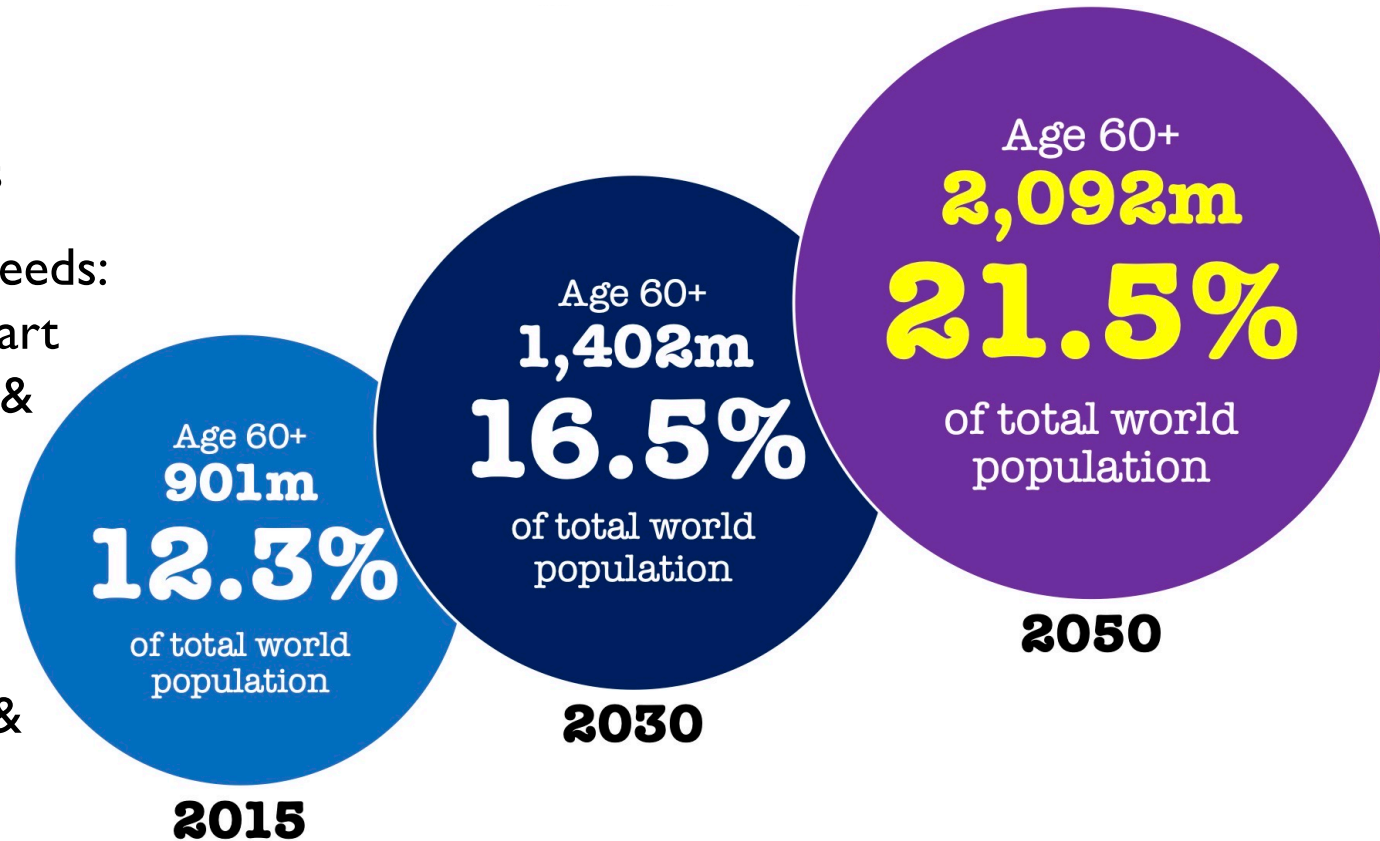


Punggol Digital District: Masterplan & Zoning



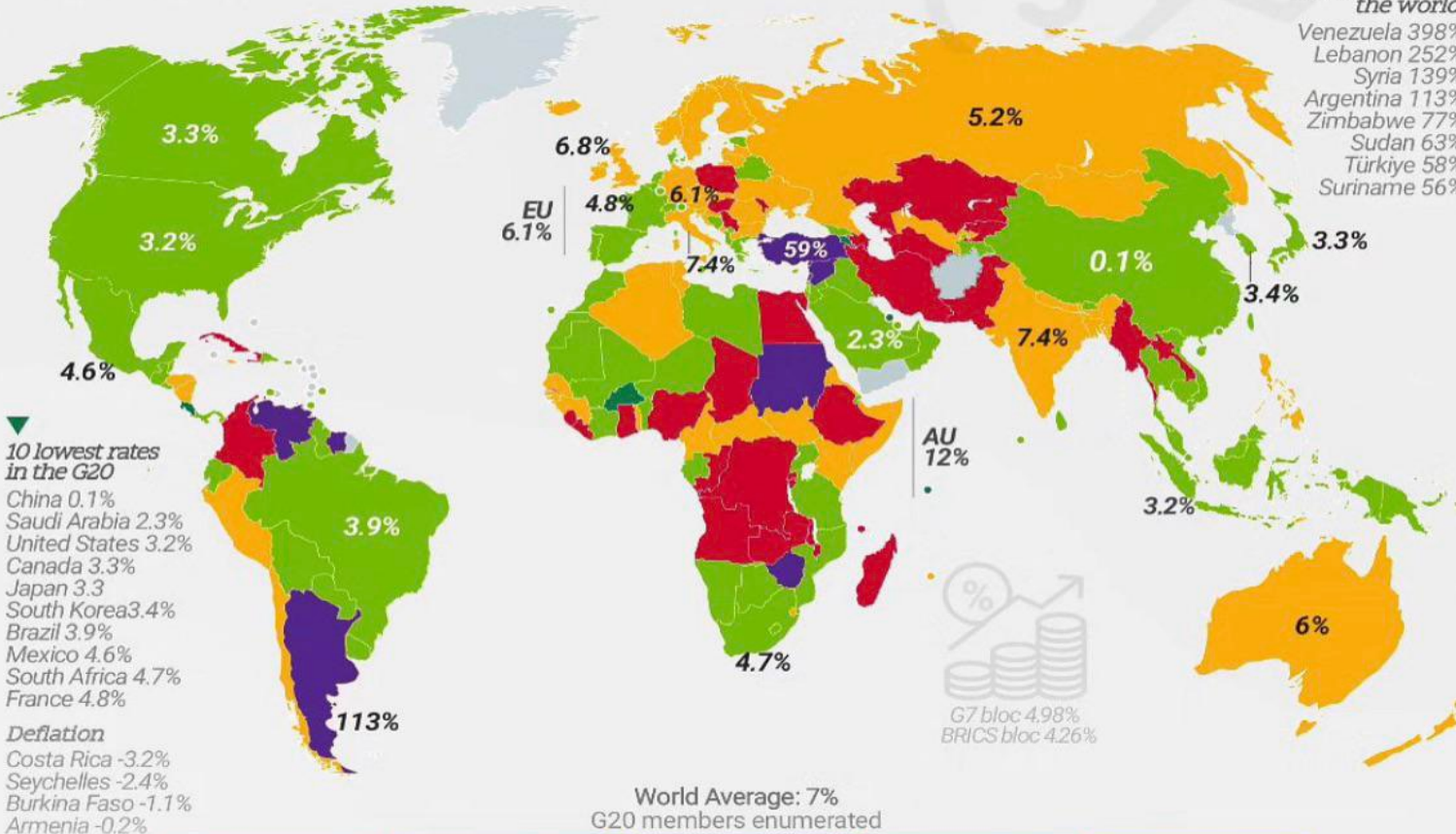
Global Social Issue: **Aging Population**

- Ageism & longevity
- Ageism & loneliness
- Ageism & medical needs: obesity, diabetes, heart diseases, Alzheimer & dementia
- Medical, healthcare & wellness
- Leisure, recreation & social interaction
- Bio-medical technologies: remote monitoring & telemedical services
- Accessibility, fall-prevention, safety & security, caregiving & allied healthcare



Global Economic Issue: Inflation

(%) CPI Jul-Aug 2023



Referring to the percentage of inflation by the Consumer Price Index - CPI recorded in the immediately previous 12 months, in July and August, by the countries' statistics departments, according to TradingEconomics.

Here's the inflation breakdown for August 2024 — in one chart

These are some of the core categories, plus other items with notable year-over-year price changes.

All items	2.5%
Food	2.1%
Food at home	0.9%
Eggs	28.1%
Pozan noncarbonated Juices + drinks	18.3%
Frankfurters	11%
Dried beans, peas + lentils	6.8%
Uncooked Beef roasts	6.7%
Butter	6.7%
Pork chops	5%
Uncooked Ground beef	4.9%
Other fats + oils including Peanut butter	4.7%
Olives, pickles, relishes	4.2%
Oranges including tangerines	4.1%
Tomatoes	3.9%
Baby food + formula	3.7%
Sugar including sugar substitutes	3.6%
Fresh whole milk	3%
Crackers, bread + cracker products	2.8%
Food away from home	4%
Limited service meals + snacks	4.3%
From vending machines + mobile vendors	4%
Energy	-4%
Electricity	3.9%
All items less food + energy	3.2%
Motor vehicle insurance	16.5%
Photographic equipment + supplies	14.7%
Video discs + other media	14.3%
Gardening + lawn care services	13.5%
Cigarettes	9.3%
Checking account + other bank services	8.9%
Veterinarian services	7.6%
Care of invalids + elderly at home	7.4%
Admission to sporting events	7.2%
Day care + preschool	6.2%
Hospital including related services	5.8%
Laundry + dry cleaning services	5.7%
Indoor plants + flowers	5.6%
Postage + delivery services	5.5%
Tax return preparation + other accounting fees	5.4%
Motor vehicle maintenance + servicing	5.1%
Rent of primary residence	5%

Note: Items in bold represent major consumer price index categories.
Not seasonally adjusted
Table: Gabriel Cortes / CNBC
Source: U.S. Bureau of Labor Statistics
Data as of Sept. 11, 2024

